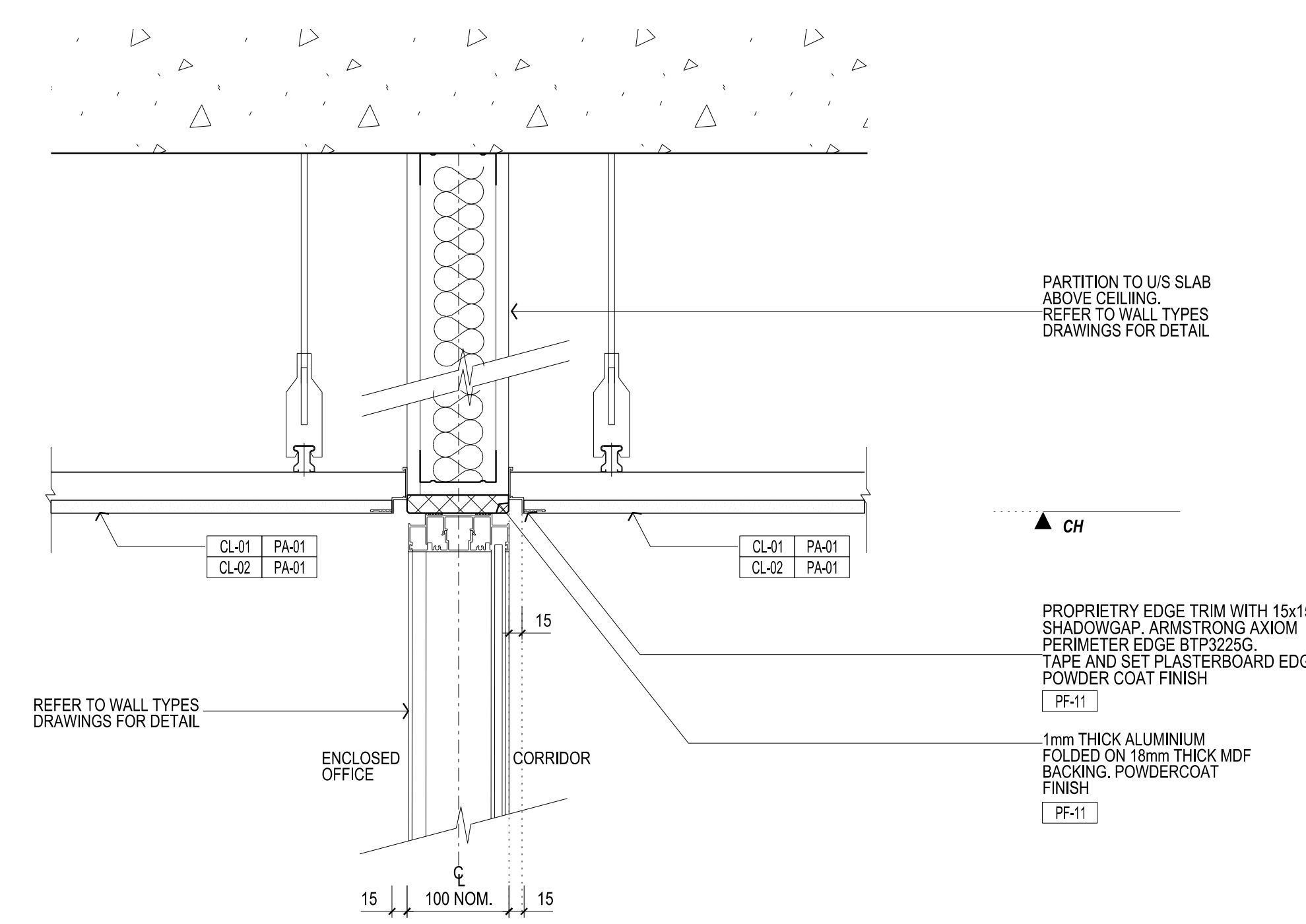
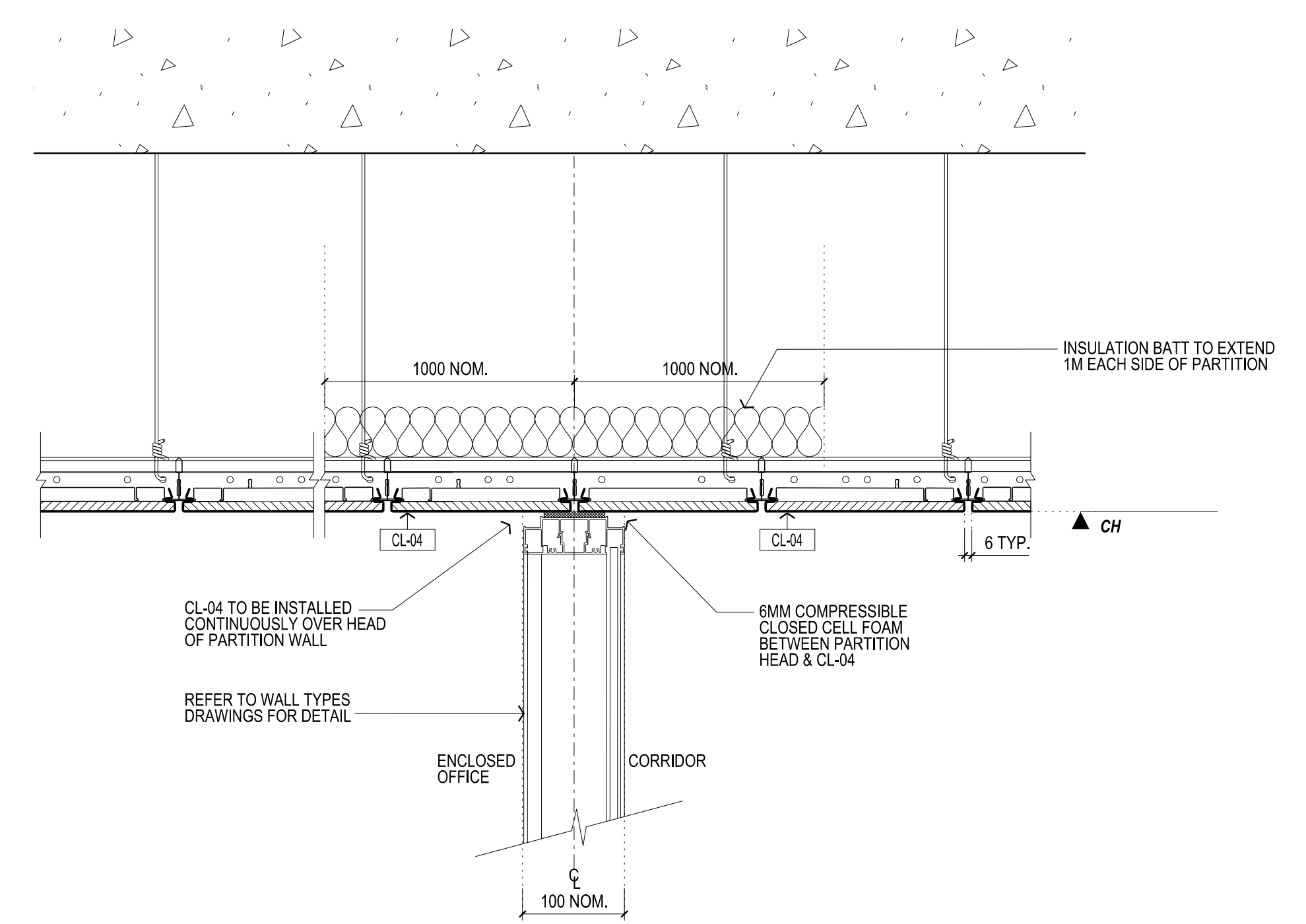
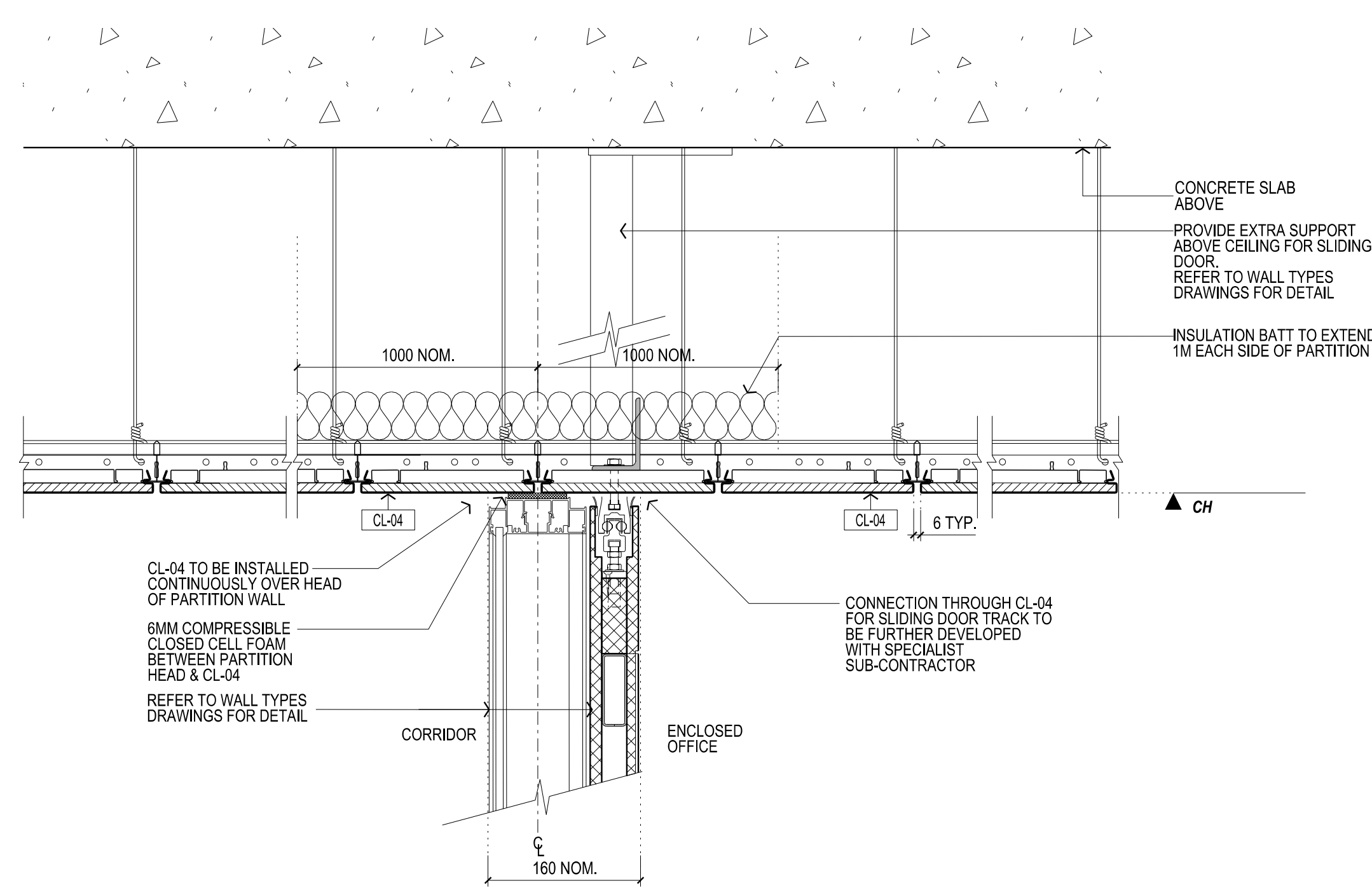


THIS DRAWING IS AN UNCONTROLLED COPY UNLESS STAMPED OTHERWISE

CONTRACTORS SHALL VERIFY JOB DIMENSIONS BEFORE ANY JOB COMMENCES. ALL SHOP DRAWINGS SHALL BE SUBMITTED TO THE SUPERINTENDENT AND MANUFACTURER SHALL NOT COMMENCE FROM THE RETURN OF DRAWINGS SHOWN HEREIN. BY THE CONTRACTOR, DIMENSIONS SHALL TAKE PRECEDENCE OVER SCALES. THIS DRAWING SHALL BE READ IN CONJUNCTION WITH ALL RELEVANT CONTRACT SPECIFICATIONS AND DRAWINGS COPYRIGHT OF THIS DRAWING IS VESTED IN WARDLE

- General Notes
- CL-XX CEILING SYSTEM. REFER TO MATERIALS SCHEDULE
 - CH CEILING HEIGHT
 - FF-XX POWDERCOAT FINISH. REFER TO MATERIALS SCHEDULE
 - PA-XX PAINT FINISH. REFER TO MATERIALS SCHEDULE



01 METAL PAN CEILING TILE TO SLIDING DOOR - TYPICAL SECTION DETAIL SCALE 1:5

02 METAL PAN CEILING TILE TO GLASS PARTITION - TYPICAL SECTION DETAIL SCALE 1:5

03 PLASTERBOARD CEILING TO GLASS PARTITION - TYPICAL SECTION DETAIL SCALE 1:5

- NOTES
1. REFER TO 2000 SERIES DWGS FOR CEILING PLANS FINISHES & SETOUT
 2. REFER TO SERVICES CONSULTANTS DOCUMENTATION FOR SPECIFICATION OF FIXTURES & FITTINGS BELOW
 3. ENSURE ALL EMERGENCY LIGHT SMOKE DETECTOR LIGHT FITTING WIRES ARE RETICULATED TO SLAB. ALL WIRES TO BE SPRAYED OR PRECOLOURED TO MATCH ADJACENT CEILING. REFER TO MATERIALS SCHEDULE FOR DETAILS.
 4. ALL SERVICES TO BE POWDERCOATED OR PAINTED ON SITE TO MATCH CEILING COLOUR. REFER TO MATERIALS SCHEDULE FOR EXACT SPECIFICATION.
 5. TO BE READ IN CONJUNCTION WITH A2020 CEILING PLANS AND WITH A2010 PACKAGE DETAILS AND A2010 WALL TYPES DRAWINGS

| Rev | Issue | Revision Description | And | Date |
|-----|-------|----------------------------|-----|----------|
| B | SG | FOR CONSTRUCTION | | 25.11.13 |
| A | SG | UPDATED DETAILS AS CLOUDED | | 17.09.13 |
| 02 | SG | 100% CD - TENDER ISSUE | | 07.09.12 |
| 01 | SG | 90% CD ISSUE | | 10.08.12 |

| Rev | Issue | Revision Description | And | Date |
|-----|-------|----------------------------|-----|----------|
| B | SG | FOR CONSTRUCTION | | 25.11.13 |
| A | SG | UPDATED DETAILS AS CLOUDED | | 17.09.13 |
| 02 | SG | 100% CD - TENDER ISSUE | | 07.09.12 |
| 01 | SG | 90% CD ISSUE | | 10.08.12 |



Client: University of Melbourne Parkville Campus
 Project: Faculty of Architecture Building and Planning

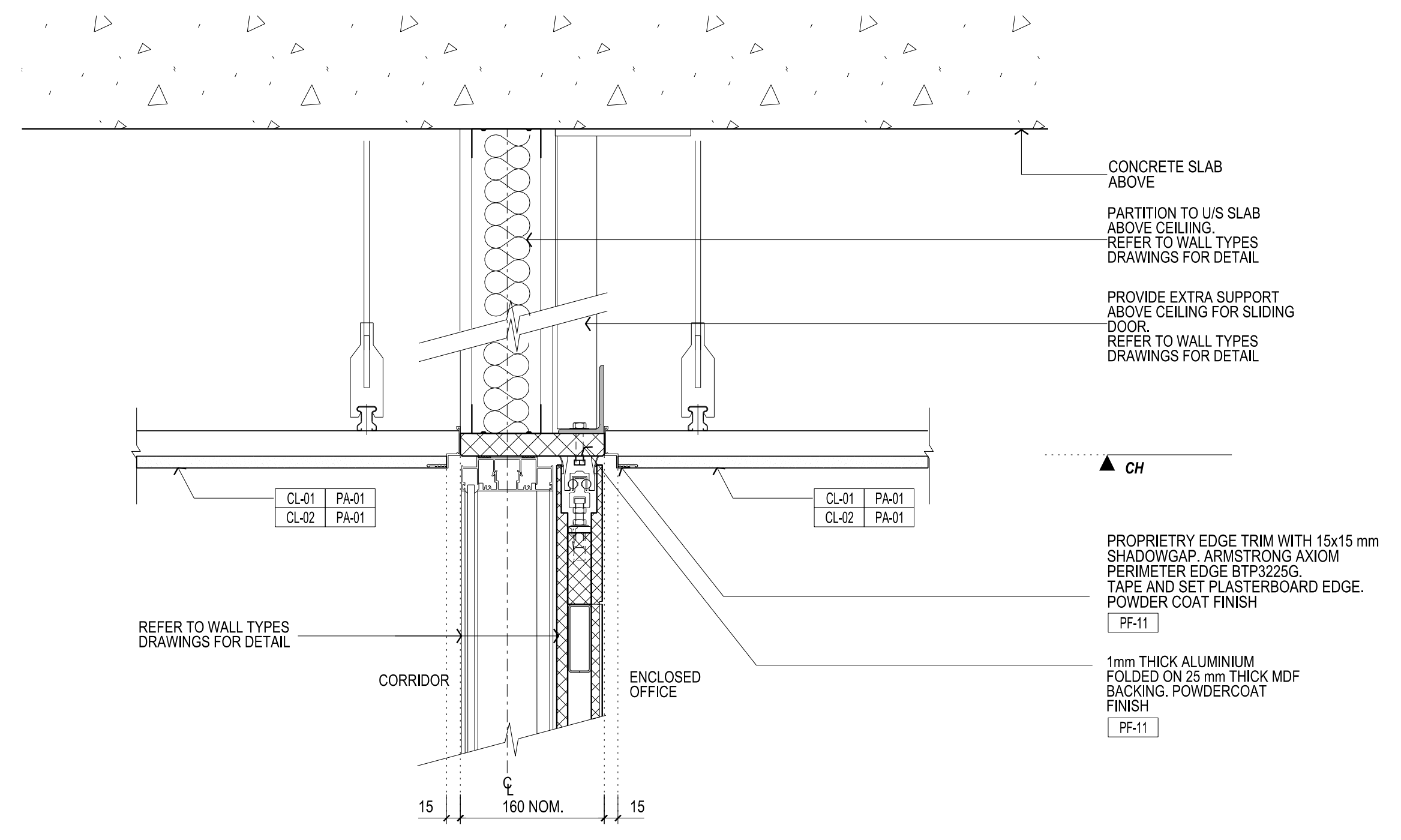
Title: CEILING JUNCTION DETAILS

| | | | |
|-------------|---------|----------|-----------------------|
| Project No. | 0913 | Scale | 1:5 @ A0 1:10 @ A2 |
| Drawing No. | AR 7851 | Revision | B |

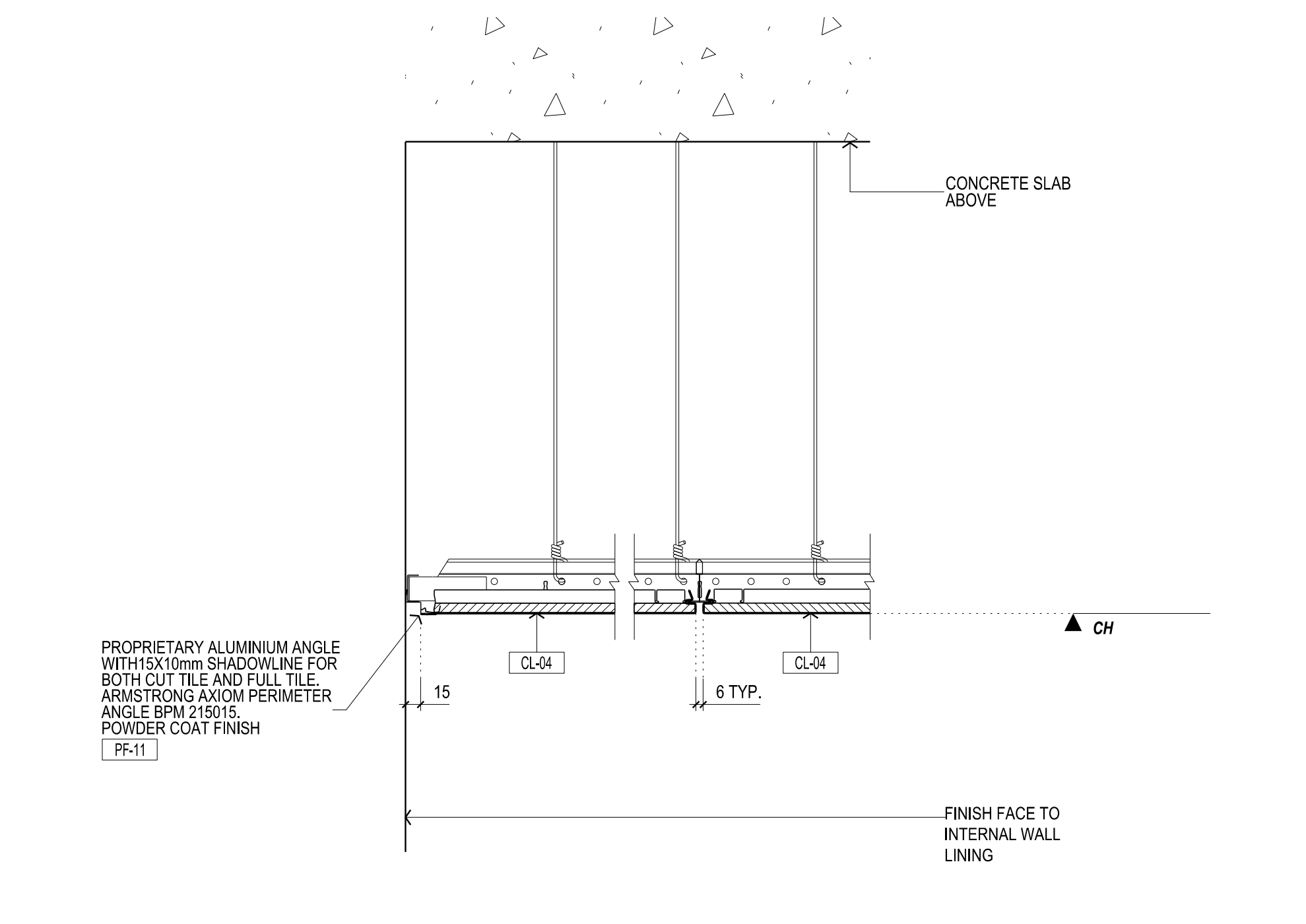
Date: Dec 2011 Drawn: DH Co-Ord: JWI Chk: SG

FILENAME - SFRS

FOR CONSTRUCTION

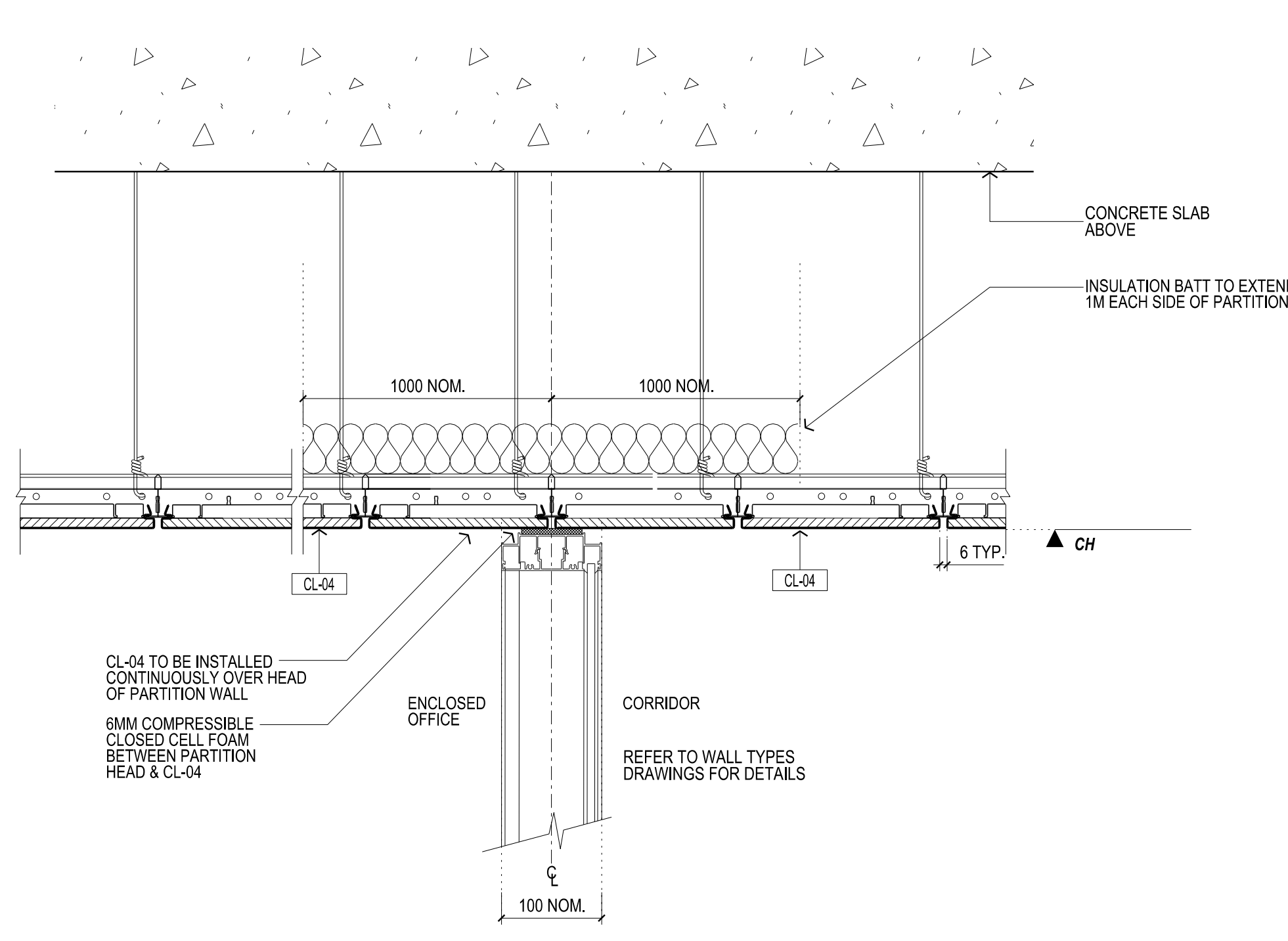


04 METAL PAN CEILING TILE TO GLASS PARTITION - G01 LIBRARY ONLY SECTION DETAIL SCALE 1:5

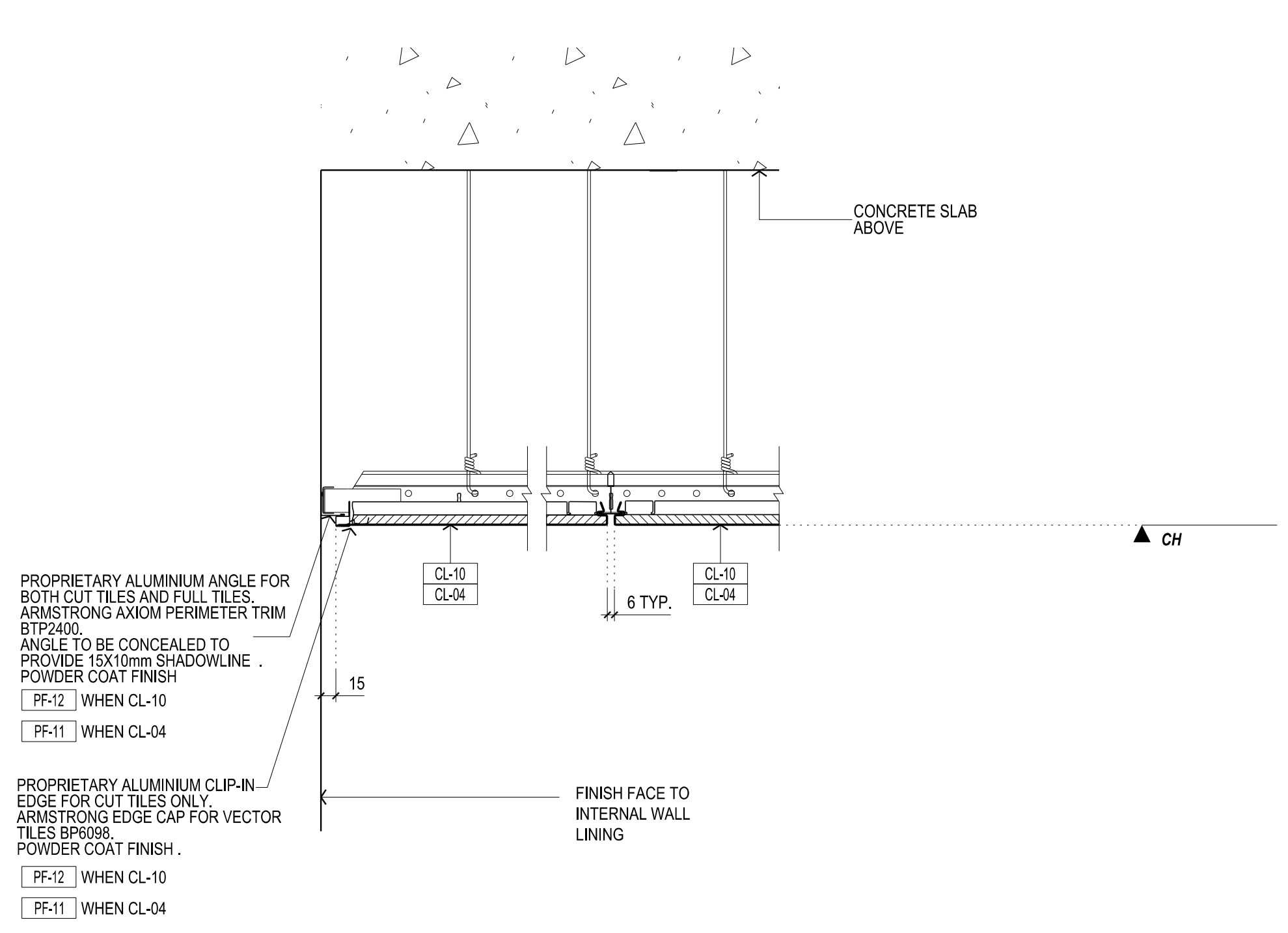


05 PLASTERBOARD CEILING TO SLIDING DOOR - TYPICAL SECTION DETAIL SCALE 1:5

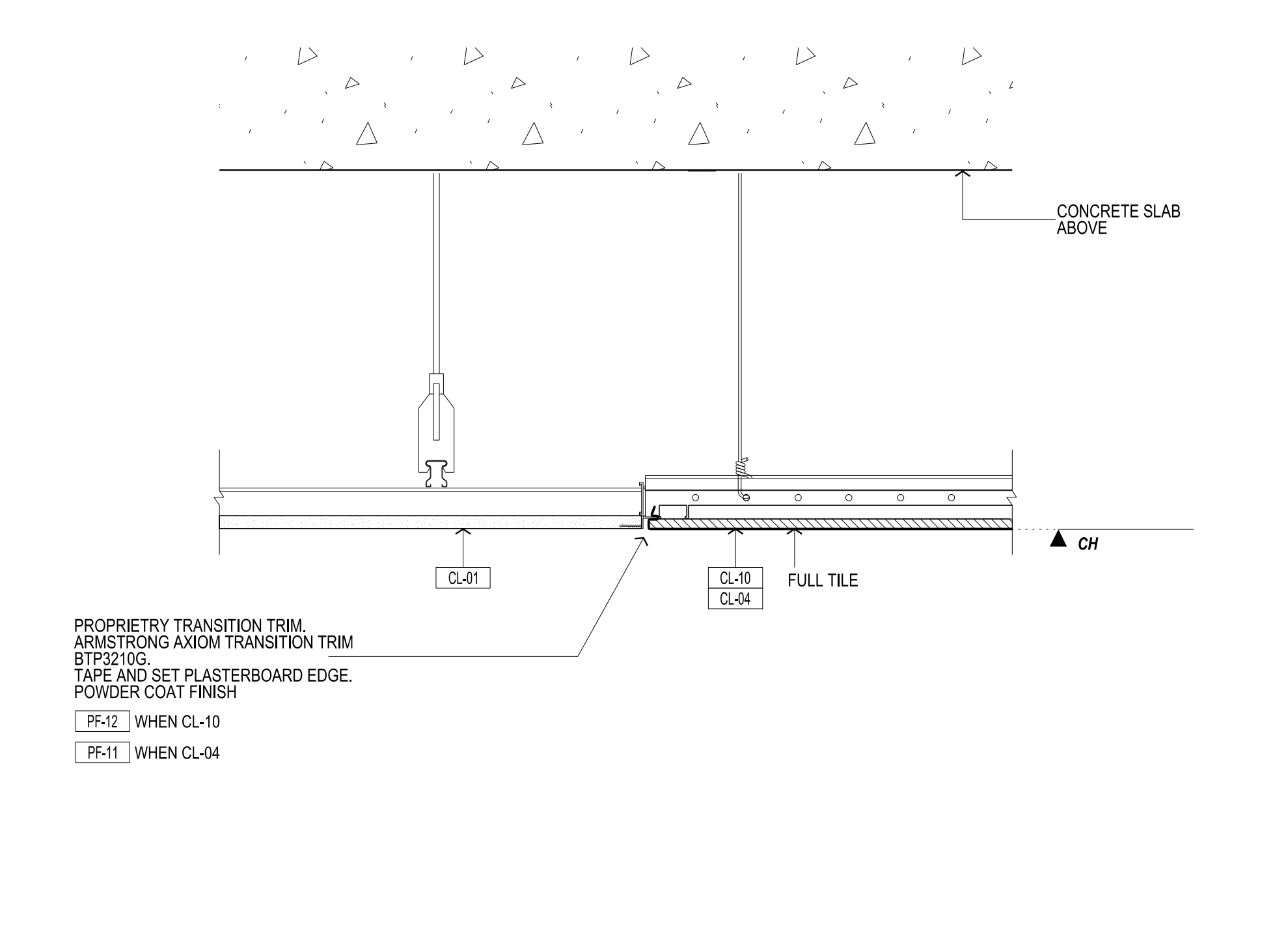
06 METAL PAN CEILING TILE TO WALL JUNCTION - TYPICAL SECTION DETAIL SCALE 1:5



07 METAL PAN CEILING TILE TO GLASS PARTITION - LEV.01 DEAN'S AREA ONLY SECTION DETAIL SCALE 1:5



08 METAL PAN CEILING TILE TO WALL JUNCTION - L01 DEAN'S AREA / G01 LIBRARY ONLY SECTION DETAIL SCALE 1:5



09 METAL PAN CEILING TILE TO PLASTERBOARD CEILING - TYPICAL SECTION DETAIL SCALE 1:5